

TPWS Control Unit

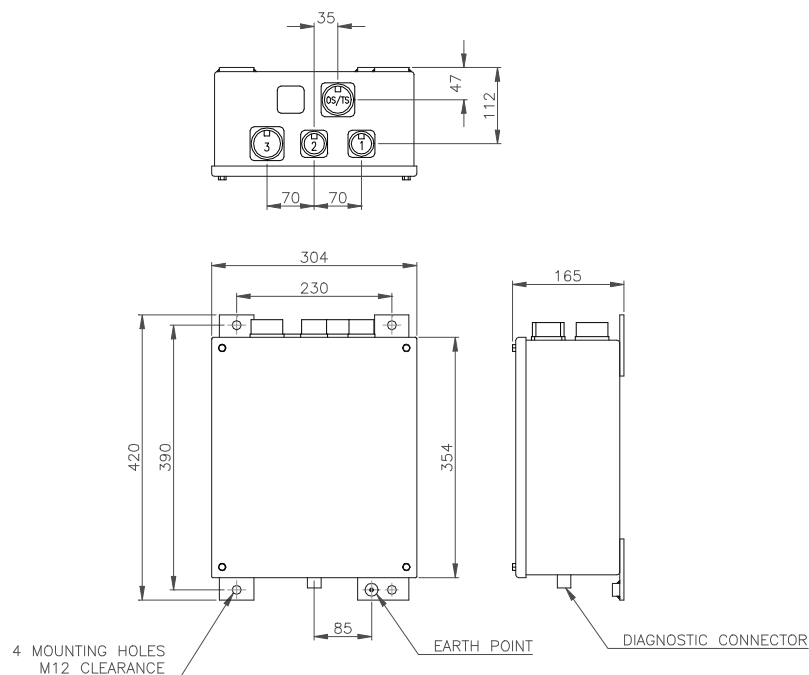
Manufacturing Ref. TY264



The TPWS Control Unit forms part of the STS Signals Train Protection and Warning System complying with the requirements of Group Standard GE/RT8035.

The Control Unit contains:-

- The control logic for the Automatic Warning system, the Overspeed Sensor System and the Train Stop System.
- The power supply
- The brake interface
- The ATP/TPWS interface
- The AWS Receiver selection interface
- A suitable means of connecting all peripheral equipment
- Connection to diagnostic port



STS Signals Ltd
Doulton Road, Cradley Heath, West Midlands B64 5QB

Tel: +44 (0) 1384 567755
Fax: +44 (0) 1384 567710
Email: signals@sts-international.co.uk