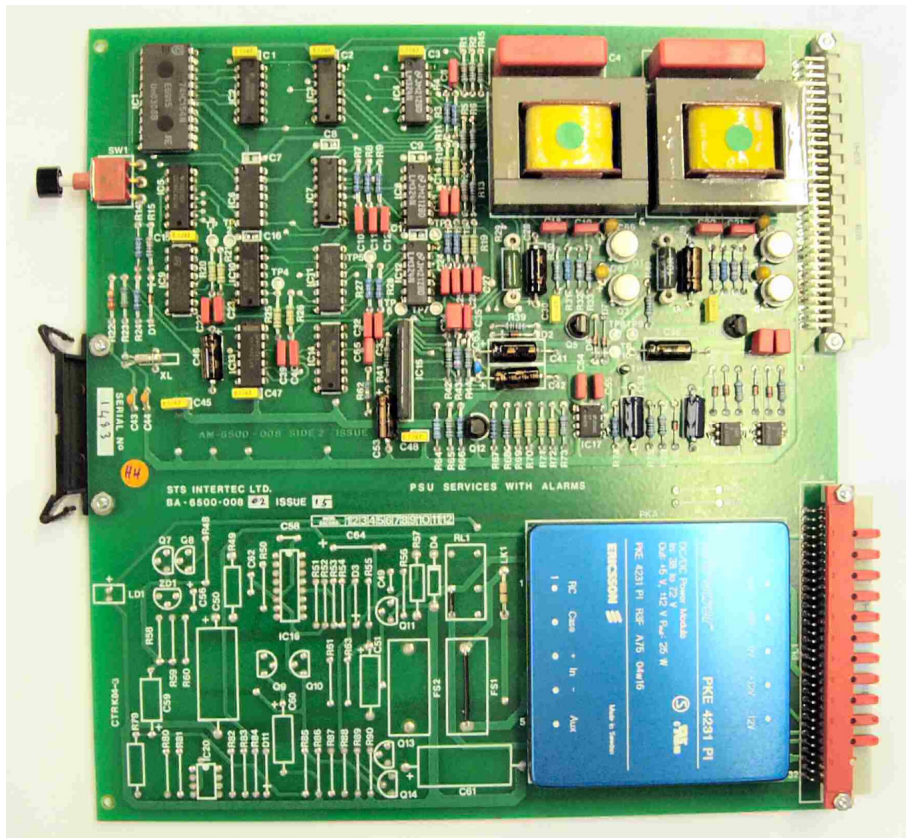


# CONCEPT 32 - PSU Services Card BA-6500-008/02



**CONCEPT 32—PSU Services Card /02 Version**

## PSU Services Card

The 6500/008/02 version of the PSU/Services board is used on concentrators of greater than 64 lines capacity or when additional power requirements are called for on the 32/64 line concentrator product range. Battery charging is then controlled by a rack mounted 50v Power Supply (e.g. Eltek, Powec or Power One Units) and therefore the battery charging circuitry is omitted from the 02 version of this board, together with its associated STS Transformer Unit.

The 6500/008/01 Version of the PSU/Services board is used on standard concentrators of up to 64 line capacity. The board contains charging circuitry used in conjunction with the STS Transformer Unit (6500-019/xx) to control charging current to the concentrators' -50v batteries.